

ASL Scenario J1 Urban Guerilla

Initial Setup

Serial	Initial Hex location	Target hex Location	Event	DRM	Red Die	White Die	Result
German Setup							
1	23FF7		A Panther V G/AL Bartram 9-2 CA EE8-FF8 Boresighting 22H7				A -1 ACQ 22H7
2	22O10		B PzKfw IV J CA N9-O9 Boresighting 22M8				B -1 ACQ 22M8
3	23Z8		K 228, C PAK 43, /Konig 8-0 CA Y9-Z9 Boresighting 22K8				C -1 ACQ 22K8
4	23U6		D SPW 251/1 CA U7-V6 Boresighting 22I8				D -1 ACQ 22I8
5	22L9		I 658-LMG/Hamann 8-1				?
6	22K10		H 658-PSK				?
7	22D9		G 658, B 658				?
8	23X7		C 658-PSK on Rooftop				?
9	23Y8		D 658-MMG/Winter 9-1 on Rooftop				?
10	23Z7		J 658-LMG on Rooftop				?
11	23CC8		E 658, A 658-LMG				?
12	23DD 7		F 658				?
Russian Setup							
13	22P6		F 458, E 458, D 458-DC/Maletski 8-1 outside stream				
14	22O6		J 458-FT, K 458-LMG, L 458-DC/Parolow 9-2 outside stream				
15	22N5		A T-34/85 CE Stopped CA M6-N6				
16	22M5		B T-34/85 CE Stopped CA M6-N5				
17	22I6		H 458, O 248 in Building				
18	22G6		N 248-HMG, A 458/Levkov 8-0 in Building				
19	22F6		I 458				
20	22D6		B 458, C 458-LMG, G 458 in Building				
21	22B5		C T-34/85 /AL Tomilin 9-1 CE Stopped CA B6-A6				
22	22H7		German Sniper Placement				
23	22L6		Russian Sniper Placement				

Turn 1

Serial	Initial Hex location	Target hex Location	Event	DRM	Red Die	White Die	Result	DRp
Russian Turn								
RALLY PHASE								
24			Wind change DR		☒	☐	NE	
PREP FIRE PHASE								
25	22G6	23Y8	N 248-HMG, A 458/Levkov 8-0 PFire on Rooftop 23Y8 (concealed ½ FP) 4¼ FP	+1 Height Advantage	☒	☐	NE	
26	22N5	22K10	Stopped A T-34/85 PFire MA HE at Infantry 22K10 range 6 TH# 8	+5 (+2?/+3TEM)	☒	☐	Miss, - 1 ACQ	
27	22N5	22K10	Stopped A T-34/85 PFire CMG/BMG at Infantry 22K10 (concealed ½ FP) 3 FP	+3 TEM	☒	☐	NE	
MOVEMENT PHASE								
28	22P6	22P8	D 458, E 458, F 458-DC/Maletski 8-1 on hexside 22P8				2 MF	
29	22L9	22P8	? I 658-LMG/Hamann 8-1 DFFire at 22P8 hexside with 9 FP (lose ?)	-3 (-1 FFMO, -1 FFNAM - 1 LEAD)	☒	☐	NMC (4 RFP)	
30	22P8		Maletski 8-1 NMC		☒	☐	Pass	
31	22P8		D 458 NMC	-1 L	☒	☐	Break +4 DM	
32	22P8		E 458 NMC	-1 L	☒	☐	Pass	
33	22P8		F 458-DC NMC	-1 L	☒	☐	Break +4 DM	
34	22P8	22P9	E 458/Maletski 8-1 enter Building in 22P9				2 MF	
35	22O10	22P9	B PzKfw IV J DFFire at 22P9 with CE AAMG with Adjacent PBF x2 with 4 FP	+2 TEM	☒	☐	NE	
36	22O10	22P9	B PzKfw IV J DFFire at 22P9 with BU CMG with Adjacent PBF x2 with 10 FP with TCA Change	+3 (+2 TEM, +1 BU, +1 TCA - 1 FFNAM)	☒	☐	1MC	
37	22P9		Maletski 8-1 1MC		☒	☐	Break +4 DM	
38	22P9		E 458 1MC		☒	☐	Pass	
39	22O10	22P9	B PzKfw IV J DPFF at Infantry 22P9 with HE MA with Adjacent TH range 1 = TH #8	+1 TH (+2 TEM, +1 BU, +1 TCA - 1 FFNAM, -2 Case L Point Blank Range)	☒	☐	Hit, ROF, -1 ACQ	
40	22P9		Broken Maletski 8-1, E 458, attacked at 14 FP (75 mm HE)		☒	☐	2MC, Russian SAN	
41	22P9		Broken 8-1 Maletski 2MC		☒	☐	Wounds 8-1	
42	22P9		Maletski 8-1 wounds severity dr				Normal wounds	
43	22P9		E 458 2MC		☒	☐	Break +4 DM, ELR	
44	22P9		Replace with broken E 447					
45			Russian SAN dr				NE /SSR	
46			SSR Partisan Creation dr				A HS 127 Partisan Created	
47	22L9	23X10	A HS 127 location DR		☒	☐	Located in 23X10	
48	23X10		TI A HS 127 partisan is located 23X10					
49	22O10	22P8	B PzKfw IV J DPFF at Infantry 22P9 with HE MA with Adjacent TH range 1 = TH #8	+0 TH (+2 TEM, +1 BU, +1 TCA -1 FFNAM, -2 Case L Point Blank Range, -1 ACQ)	☒	☐	Hit, ROF -2 ACQ	
50	22P8		Attacked at 14 FP (75 mm HE hit)		☒	☐	NE	

Serial	Initial Hex location	Target hex Location	Event	DRM	Red Die	White Die	Result
51	2206	2209	J 458-FT, K 458-LMG, L 458-DC/Parolow 9-2 enter Building 2209				4 MF
52	22010	2209	B PzKfw IV J DPFF at Infantry 2209 with BMG Adjacent PBF 6 FP	+1 (+2 TEM, - 1 FFNAM) 0 (+2 TEM, - 1 FFNAM -1 LEAD)	🔴	⚪	NE
53	23Y8	2209	Rofftop ? D 658-MMG/ Winter 9-1 on DFFire at 2209 with 8 FP (lose ?)		🔴	⚪	1MC, Russian SAN
54			Russian SAN dr		🔴	⚪	NE /SSR
55			SSR Partisan Creation dr		🔴	⚪	Pavlovski Hero Created
56			Pavlovski Hero location DR		🔴	⚪	Located in 22P2
57			TI Pavlovski Hero located in Building 22P2				
58	2209		Parolow 9-2 1MC		🔴	⚪	Pass
59	2209		L 458-DC/Parolow 9-2 1MC	-2 LEAD	🔴	⚪	Pass
60	2209		K 458-LMG/Parolow 9-2 1MC	-2 LEAD	🔴	⚪	Pass
61	2209		J 458-FT/Parolow 9-2 1MC	-2 LEAD	🔴	⚪	Pass
62	2209	22010	L 458-DC/Parolow 9-2 DC placement PAATC on Adjacent AFV in 22010	-2 LEAD	🔴	⚪	NE
63	22M5	22M9	B T-34/85 CE stopped in 22M9				16 MP
64	22M5	22M9	B T-34/85 CE stopped Bounding Fire Adjacent at 22L9 infantry in building with MA HE range 0 TH #8	+3 TH (+2 Case C +3 TEM,-2 PBR Case L)	🔴	⚪	Hit
65	22L9		Attacked with 17 FP (85 mm HE hit)		🔴	⚪	1MC
66	22L9		Hamann 8-1 1MC		🔴	⚪	Pass, Russian SAN
67	22L9		I 658-LMG 1MC	-1 LEAD	🔴	⚪	Break + 4 DM
68			Russian SAN dr			⚪	NE
69	22M9	22L9	B T-34/85 CE stopped Bounding Fire Adjacent at 22L9 infantry in building with BMG/CMG 6 FP	+3 TEM(X2 PBF, x½ Bound Fire)	🔴	⚪	NE
70	22I7	22I9	O 248 move to 22I9 (Bypass 22I7)				4MF
71	22I6		H 458, declare double time				2MF
72	23X7		? I 658-PSK on Rooftop DFfire at 22J7 H 458-DC in bypass on hexside 22J7-K7 3 FP (lose ?)	-2 (-1 FFNAM, -1 FFMO, LRF x½ FP)	🔴	⚪	PTC
73	22J7		H 458 PTC		🔴	⚪	Pass
74	22J7	22K8	H 458, continue move to 22K8				3MF
75	23Z8		K 228 PAK 43/Konig 8-0 fires HE at 22K8 infantry TH# 8	-3 TH (-1 FFNAM, -1 FFMO, -1 ACQ)	🔴	⚪	Hit
76	22K8		Attacked with 18 FP (88 mm HE hit)		0	⚪	K/4, Casualty reduction
77	22K8		H 458 reduced to H 248				
78	22K8		H 248 4MC		🔴	⚪	Break + 4 DM
79	22F6	22E7	I 458 move to 22E7				1MF
80	23Z7	22E7	J 658-LMG on Rooftop DFFire at 22E7 with 6 FP	-2 (FFNAM, -1 FFMO, 658 LRF x½ FP)	🔴	⚪	2MC
81	22E7		I 458 2MC		🔴	⚪	Break + 4 DM
82	22B5	23FF10	C T-34/85 /AL Tomilin 9-1 CE Move to 23FF10 CA EE10-FF9 stopped				12 MP
83	23FF10	23DD7	C T-34/85 CE stopped Bounding Fire at 23DD7 infantry in building with MA HE range 3 TH# 8	+4 TH (+2 Case C +3 TEM,-1 LEAD)	🔴	⚪	Miss, -1 ACQ
84	22D6	22B6	B 458, C 458-LMG, G 458 declare double time move enter building				3MF
85	22D9	22B6	G 658, B 658 DFF at 22B6 12 FP (lose ?)	+2 (-1 FFNAM, +1 BRUSH, +2 TEM)	🔴	⚪	1MC
86	22B6		B 458 1MC		🔴	⚪	Pass
87	22B6		C 458-LMG 1MC		🔴	⚪	Break + 4 DM
88	22B6		G 458 1MC		🔴	⚪	Pass
89	22B6	22B8	B 458, G458 continue Movement				6 MF
DEFENSIVE FIRE PHASE							
90	23CC8	23X10	E 658 DFLF fires at 23X10 with 6 FP (without losing ? NO LOS GOKU)	+1 (+1 TEM)	🔴	⚪	PTC, no effect
91	23CC8	23X10	A 658-LMG DFfire at 23X10 with 9 FP (without losing ? NO LOS GOKU)	+1 (+1 TEM)	🔴	⚪	ROF, 2MC Casualty reduction A HS 127
92		23X10	TI A HS 127 partisan 2MC		🔴	⚪	Partisan Eliminated
93			Russian SAN dr			⚪	NE
ADVANCE FIRE PHASE							
ROUT PHASE							
94	22P8 bypass	22P8	Broken D 458, F 458-DC enter building 22P8				2MF
95	22P9	22P8	Broken E 447, wounded Maletski 8-1 enter building 22P8				2MF
96	22K8	22K7	Broken H 248 enter building 22K7				2MF
97	22E7	22D6	Broken I 458 enter building 22D6				2MF
98	22L9	22K10	Broken I 658-LMG enter building 22K10				2MF
ADVANCE PHASE							
99	22B8	22B9	Cx B 458, G458 advance in 22B9				

Serial	Initial Hex location	Target hex Location	Event	DRM	Red Die	White Die	Result
100	2219	22H9	O 248 advance in 22H9				
101	2209	22O10	J 458-FT PAATC advance into Vehicle Location	-2 LEAD	☒	☒	Pass Advance into CC vs AFV
102	2209	22O10	K 458-LMG, PAATC advance into Vehicle Location	-2 LEAD	☒	☒	Pass Advance into CC vs AFV
103	2209	22O10	L 458-DC PAATC advance into Vehicle Location	-2 LEAD	☒	☒	Fail
104	2209	22O10	Parolow 9-2 PAATC advance into Vehicle Location		☒	☒	Pass Advance into CC vs AFV
CLOSE COMBAT PHASE							
105	22O10		J 458-FT ambush attempt vs B PzKfw IV J CA N9-09	-2 LEAD		☒	4 (no ambush)
106	22O10		B PzKfw IV J CA N9-09 ambush defence vs J 458-FT	+3 (+2 Vehicle, + 1BU)		☒	5 (no ambush)
107	22O10		K 458-LMG ambush attempt vs B PzKfw IV J CA N9-09	-2 LEAD		☒	2 (ambush -3 => dr)
108	22O10		B PzKfw IV J CA N9-09 ambush defence vs K 458-LMG	+3 (+2 Vehicle, + 1BU)		☒	5 (ambushed by K 458-LMG) B PzKfw IV J Destroyed burning wreck
109	22O10		Ambush K 458-LMG/Parolow 9-2 CC attack vs B PzKfw IV J CA N9-09 CCV# 6 (5+1) (MMC+SMC)	-3 (-1 Ambush. -2 LEAD)	☒	☒	
110	22P2		149 Pavlovski gain ?				
111	23Z8		K 228, C PAK 43/Konig 8-0 CA Y9-Z9 gain ?				
German Turn							
RALLY PHASE							
112			Wind change DR		☒	☒	NE
113	22K10		Broken I 658-LMG first self-rally attempt	+4 DM	☒	☒	Fail, remove DM
114	22P8		Broken wounded Maletski 8-1 (7-0) self-rally attempt	+4 DM	☒	☒	Fail, remove DM
PREP FIRE PHASE							
115	23Y8	22O9	Rooftop D 658-MMG/Winter 9-1 PFire at 22G6 with 8 FP	+2 (+3 TEM, - 1 LEAD)	☒	☒	NE
116	23Z8	22K7	K 228, C PAK 43, /Konig 8-0 CA Y9-Z9 maintain ? Fire HE at infantry TH# 7 range 7	+2 TH (+2 TEM)	☒	☒	Miss, - 1 ACQ
MOVEMENT PHASE							
117	23DD 7	23CC6	F 658 declare double time move				2 MF ROF, K/2, Casualty reduction F
118	22G6	23CC6	N 248-HMG, A 458, 8-0 Levkov DFire at 23CC6 with 8 FP	-2 (-1 FFNAM, -1 FFMO)	☒	☒	658 => F 348
119	23CC6		F 348 2 MC		☒	☒	Pass
120	23CC6	23CC7	F 348 continue movement enter building				4 MF
121	22L9	22K10	Hamann 8-1				2 MF
122	23U6	23BB4	D SPW 251/1 CA U7-V6 move to 23BB4 CA AA5-BB5				11 MP
DEFENSIVE FIRE PHASE							
123	22O9	23Y8	L 458-DC DFIF on 23Y8 Rooftop with 2 FP	+1 Height Advantage	☒	☒	NE, Cowers
124	22N5	22K10	Stopped A T-34/85 DFIFire MA HE at Infantry 22K10 TH# 8 (range 6) (658-PZS ? + 2 TH)	+2 (+3TEM, -1 ACQ)	☒	☒	Miss, -2 ACQ
125	22N5	22K10	Stopped A T-34/85 DFIFire CMG/BMG at Infantry 22K10 6 FP (658-PZS ½? 3 FP) ?	+3 TEM	☒	☒	NE
126	22H9	22D9	O 248 DFIF at 22D9 with 2 FP	+3 TEM	☒	☒	NE
ADVANCE FIRE PHASE							
127	22D9	22H9	G 658, B 658 OPP Fire at 22H9 with 12 FP	+2 TEM	☒	☒	NE
128	22O10	22O10	Blaze spreading DR to woods => 7	+0	☒	☒	22O10 Blaze Spread
ROUT PHASE							
Russian							
129	22O10	22P9	J 458-FT, K 458-LMG/Parolow 9-2 voluntary break escaping blaze in woods 22O10 enter building 22P9				Break + 4 DM
ADVANCE PHASE							
CLOSE COMBAT PHASE							
130	23CC7		F 348 gain ?				

Turn 2

Serial	Initial Hex location	Target hex Location	Event	DRM	Red Die	White Die	Result
Russian Turn							
RALLY PHASE							
131			Wind change DR		☒	☒	NE
132	22K10		Broken I 658-LMG first self-rally attempt	Leader, - 1 RA in Building)	☒	☒	Rally
133	22P8		Broken wounded Maletski 8-1 (7-0) self-rally attempt	-1 (- 1 RA in Building,)	☒	☒	Rally
134	22P8		Broken F 458/Maletski 8-1 (7-0) rally attempt	-1 (- 1 RA in Building,)	☒	☒	Rally
135	22P8		Broken D 458-DC/Maletski 8-1 (7-0) rally attempt	-1 (- 1 RA in Building,)	☒	☒	Rally
136	22P8		Broken E 447/Maletski 8-1 (7-0) rally attempt	-1 (- 1 RA in Building,)	☒	☒	Rally
137	22P9		Broken Parolow 9-2 self-rally attempt	+4 DM	☒	☒	Rally, Field promotion Leader creation
138	22P9		Leader creation Table DR	+1 (-1 Morale =>8, +1 russina, + 1 broken)		☒	Kamensky 8-0 Created

Serial	Initial Hex location	Target hex Location	Event	DRM	Red Die	White Die	Result
139	22P9		Broken J 458-FT/Parolow 9-2 rally attempt	+1 (+4DM, -1 RA in Building, -2 LEAD)	☒	☒	Fail
140	22P9		Broken K 458-LMG/Parolow 9-2 rally attempt	+1 (+4DM, -1 RA in Building, -2 LEAD)	☒	☒	Rally
141	22K10		Broken L 658-LMG/Parolow 9-2 rally attempt	-2 (-1 RA in Building, -1 LEAD)	☒	☒	Rally
PREP FIRE PHASE							
142	22N5	22K10	Stopped A T-34/85 Fire MA HE at Infantry Level 0 22K10 TH# 8 (range 6) (658-PZS ? + 2 TH)	+1 (+3TEM, -2 ACQ)	☒	☒	Hit, -2ACQ
143	22K10		attacked with 17 FP (85 mm HE hit)		☒	☒	2MC
144	22K10		Hamann 8-1 2MC		☒	☒	Break + 4 DM
145	22K10		I 658-LMG 2MC		☒	☒	Pass
146	22K10		? H 658-PSK 2MC		☒	☒	Pin, Russian SAN, lose ?
147			Russian SAN dr		☒	☒	NE
148	22N5	22K10	Stopped A T-34/85 Fire MG at Infantry Level 0 22K10 with 6 FP	+ 3TEM	☒	☒	NE
MOVEMENT PHASE							
149	22H9	23AA10	O 248 move to building 23AA10				4 MF
150	23BB9	23EE10	B 458, G 458 move to building 23AA10				3 MF
151	23FF7	23EE10	A Panther V G/AL Bartram 9-2 DFFire AAMG/BMB/CMG at 23EE10 with 10 FP	-1 (+2 TEM, -1 FFNAM, -2 LEAD)	☒	☒	1MC
152	23EE10		B 458 1MC		☒	☒	Pass
153	23EE10		G 458 1MC		☒	☒	Pass
154	22B6	23GG9	C 458-LMG declare double time move to 23GG9				6 MF
155	22D9	23EE10	B 658, G 658 DFFire at 23EE10 with 12 FP	+1 (+2 TEM, -1 FFNAM)	☒	☒	K/2, Covers IFT=> 8 FP
156	23EE10		B 458 Random Selection				suffer casualty reduction
157	23EE10		G 458 Random Selection				
158	23EE10		B 248 MC2		☒	☒	Pin
159	23EE10		G 458 MC2		☒	☒	Break + 4 DM
160	22G6	22D6	8-0 Levikov move in Building 22D6				4 MF
161	22G6	22H8	N 248-HMG, A 458 move to building 22H8				4 MF
162	22P2	22P7	? 149 Pavlovski declare double time move to 22P7				8 MF
163	22M9	23U10	B T-34/85 CE stopped move to 22N9 CA U9-V9 stop				7 MP
164	23U10	23X7	B T-34/85 CE stopped Bounding Fire at 23X7 infantry on Rooftop with MA HE TH# 8 range 4	+4 TH (+2 Case C, +1 Case C1, +1 Height advantage)	☒	☒	Miss, -1 ACQ
165	23U10	23X7	B T-34/85 CE stopped Bounding Fire at 23X7 infantry on Rooftop with BMG/CMG 6 FP	+1 Height Advantage	☒	☒	NE
166	23X7	23U10	C 658-PSK DFFire PSK at B T-34/85 in 23X7 TH# 4 range 4	+1 TH (+1 Case j)	☒	☒	Miss
167	22P9	23R10	K 458-LMG/Parolow 9-2 declare double time Movement				1MF
168	23Y8	23R10	D 658-MMG/ 9-1 Winter on Rooftop DFFire at 23R10 with 8 FP	-3 (-1, FFMO, -1 FFNAM, -1 LEAD)	☒	☒	ROF, 3 KIA, Parolow 9-2, K 458-LMG Eliminated, 4RFP
169	23R10		LMG SW destruction dr 8 FP				
170	22O9	23T10	L 458-DC declare Double time Movement				3MF
171	23Y8	23R10	D 658-MMG/9-1 Winter retained ROF on Rooftop DFFire at 23T10 with 5 FP	+0 (+1 Woods, +1 Tank LVH, -1 FFNAM, -1 LEAD)	☒	☒	NE
172	23T10	23T10	L 458-DC Cx continue movement 23T8				5 MF
173	22P8	23U9	F 458, D 458-DC, E 458 Declare double time movement enter Building 23U9				6 MF
174	22P8	22M9	Wounded Maletski 8-1				3 MF
175	23FF10	23GG10	C T-34/85 /AL 9-1 Tomilin CE Move to 23GG9 CA FF8-GG8 stopped				5 MP
176	23GG10	23FF7	C T-34/85 /AL 9-1 Tomilin BFire at Panther 23FF7 with MA AP TH# 10 range 3	+3 TH (+2 Case B, +2 Case C, +1 Case C1, -1 LEAD, -1 Target size)	☒	☒	Miss, -1 ACQ
177	23FF7	23GG10	A Panther V G/AL Bartram 9-2 DFFire with MA AP at T-34/85 23FF7 with TH# 10 Range 3	+3 TH (+2 Case J, +1 Case J1, +2 Case A, -2 LEAD)	☒	☒	Miss, -1 ACQ, MA Malf
178	23GG10	23FF6	C T-34/85 /AL 9-1 Tomilin CE Restart, move, stop 23FF6 CA EE7-FF7				9 MP + (5 MP)
DEFENSIVE FIRE PHASE							
179	23Z7	22EE10	J 658-LMG on Rooftop DFIF at 22EE10 with 9 FP	+ 2 TEM	☒	☒	NE
180	23CC8	23AA10	E 658, A 658-LMG lose ? DFIF at 23AA10 with 15 FP	+ 2 TEM	☒	☒	NE
181	23Z8	23AA10	K 228, C PAK 43/Konig 8-0 CA Y9-Z9 Lose ? Fires at infantry TH# 8 Range 2	+3 TH (+1 Case A, +2TEM)	☒	☒	Miss, ROF, - 1 ACQ
182	23Z8	23AA10	K 228, C PAK 43/Konig 8-0 CA Y9-Z9 Lose ? Fires at infantry TH# 8 Range 2	+2 TH (+1 Case A, +2TEM, -1 ACQ)	☒	☒	Miss, PAK 43 Malfunction
ADVANCE FIRE PHASE							
183	23U9	23X7	F 458, D458-DC, E 447 AFire at 23X7 level 2 with 6 FP (½ Area Fire/moved)	+4 (+3 TEM, +1 Cx)	☒	☒	NE, Covers
184	23AA10	23Z8	O 248 AFire at 23Z8 with 1 FP (½ Area Fire/moved)	+2 (+2 TEM Wall)	☒	☒	
185	22O10	22N10	Blaze spreading DR to woods => 7	+0	☒	☒	Blaze Spread to 22O10

Serial	Initial Hex location	Target hex Location	Event	DRM	Red Die	White Die	Result
ROUT PHASE							
ADVANCE PHASE							
186	23U9	23U8	Cx F 458, D458-DC, E 447 advance to 23U8				
187	23T8	23S8	Cx L 458-DC advance to 23S8				
188	22P7	22P8	Cx ? 149 Pavlovski advance to 22P8				
189	22H8	22H9	N 248-HMG, transfer HMG to A 458				
190	22H8	22H9	N 248, A 458-HMG advance to 22H9				
191	23GG9	23FF9	Cx C 458-LMG advance in 23FF9				
192	22M9	22M10	Wounded Maletski 8-1 advance to 22M10				
CLOSE COMBAT PHASE							
193	22P9		Kamensky 8-0 gain ?				
German Turn							
RALLY PHASE							
194			Wind change DR		☒	☒	NE
195	23Z8		Malf PAK 43 repair attempt dr		☒	☒	NE
196	23FF7		A Panther V G MA repair attempt		☒	☒	NE
197	22K10		Broken Hamann 8-1 self-rally attempt	+3 (+4 DM, -1 RA Building)	☒	☒	fail
198	22P9		Broken J 458-FT/Kamensky 8-0 rally attempt	-1 RA Building	☒	☒	Rally
199	22D6		Broken I 458/Levkov 8-0 rally attempt	-1 RA Building	☒	☒	Rally
PREP FIRE PHASE							
200	23X7	23U10	C 658-PSK level 2 Prep fire PSK at T-34/85 in 23U10 TH# 4 Range 4	+0	☒	☒	Miss, Russian SAN
201			Russian SAN dr			☒	Activate
202	22L4		Sniper Direction DR		☒	☒	Located 22M5 => 22K10
203	22K10		Broken Hamann 8-1 Random selection dr			☒	
204	22K10		I 658-LMG Random selection dr			☒	
205	22K10		H 658-PSK Random selection dr			☒	Break +4 DM
206	23X7	23U8	C 658-PSK level 2 Prep fire at with 6 FP	+2 TEM	☒	☒	NE
207	23Y8	23U8	D 658-MMG/Winter 9-1 on Rooftop PFire at 23U8 with 11 FP	+1 (+2 TEM, -1 LEAD)	☒	☒	1MC
208	23U8		F 458 1MC		☒	☒	Pass
209	23U8		D 458-DC 1MC		☒	☒	Pin
210	23U8		E 447 1MC		☒	☒	Pin
211	23Z8	23AA10	K 228/König 8-0 PFire at 23AA10 with 2 FP	+2 TEM	☒	☒	NE
212	22K10	23U8	I 658-LMG PFire at 23U8 with 9 FP	+2 TEM	☒	☒	NMC, Russian SAN
213			Russian SAN dr			☒	NE
214	23U8		F 458 NMC		☒	☒	Pass, German SAN
215	23U8		D 458-DC NMC		☒	☒	Pass
216	23U8		E 447 NMC		☒	☒	Pass, German SAN
217			German SAN dr			☒	NE
218			German SAN dr			☒	NE
219	23Z7	22EE10	J 658-LMG on Rooftop PFire at 23FF9 with 9 FP	+ 1 TEM	☒	☒	1MC, Russian SAN
220			Russian SAN dr			☒	SSR
221			SSR Partisan Creation dr			☒	Nemchikov Hero Created
222	22K10	23W10	Nemchikov Hero location DR		☒	☒	Located in 23V10
223	23W10	23V10	Ti Nemchikov Hero located in Building 23V10 (nearest eligible location)				
224	22EE10		C 458-LMG 1MC		☒	☒	Break +4 DM
MOVEMENT PHASE							
225	23CC7	23AA4	F 348 move to 23AA4				4 MF
226	23CC8		A 658-LMG declare double time movement				2 MF
227	23AA10	23CC7	O 248 DFFire to 23CC7 with 2 FP	+2 (+3 TEM, -1 FFNAM)	☒	☒	NE
228	23CC7	23AA4	Cx A 658-LMG continue				6 MF
229	23CC8	23EE7	E 658 move to 23EE7				4 MF
230	23FF6	23EE7	Stopped/CE C T-34/85 /AL Tomilin 9-1 DFFire at 23EE7 with BMG/CMG with 12 FP (6 FP x 2 FFP)	+0 (+2 TEM, -1 FFNAM, -1 LEAD)	☒	☒	PTC
231	23EE7		E 658 PTC		☒	☒	Pin
232	23FF7		A Panther V G/AL Bartram 9-2 start				1 MP
233	23FF6	23FF7	Stopped/CE C T-34/85 /AL Tomilin 9-1 DFFire at Panther 23FF7 with MA AP TH# 10 range 1	-4 TH (-2 PBR, -1 LEAD, -1 Target size)	☒	☒	Hit, Turret, rear

Serial	Initial Hex location	Target hex Location	Event	DRM	Red Die	White Die	Result
234	23FF6	23FF7	Stopped/CE C T-34/85 /AL Tomilin 9-1 AP TK# 17 (final TK# =12)	-5 (+1 rear facing, - 6 AF)	☒	☒	A Panther G/AL Bartram 9-2 Eliminated
235	23FF7		A Panther Crew Survival DR CS# 6		☒	☒	Inherent Crew Eliminated
236	22DD9	23DD10	B 658, G658 assault move to 23DD10				4 MF
237	23EE10	23DD10	B 248 DFFire at 23DD10 with 4 FP (2 FP x2 PBR)	+3 TEM	☒	☒	NE
238	23EE10	23DD10	B 248 SUBFire at 23DD10 with 2 FP (2 FP x2 PBR ½ area Fire)	+3 TEM	☒	☒	NE
DEFENSIVE FIRE PHASE							
239	23U10	23X7	Stopped/CE B T-34/85 DFIFire at 23X7 infantry in building Level 2 with MA HE TH# 8 range 4	+2 TH (+3 TEM, -1 ACQ)	☒	☒	Hit, -2 ACQ
240		23X7	attacked with 17 FP (85 mm HE hit)		☒	☒	2MC
241	23X7		C 658-PSK level 2 2MC		☒	☒	Break +4 DM
242	23U10	23Y8	Stopped/CE B T-34/85 DFIFire at 23Y8 infantry on Rooftop with BMG/CMG 6 FP	+1 Height Advantage	☒	☒	NE
243	23S8	23X7	Cx L 458-DC DFIFire at 23X7 with 4FP	+2 (+1 Cx, +1 Height Advantage)	☒	☒	NE
244	23U8	23Y8	Cx F 458, Pin D458-DC, Pin E 447 fire at 23Y8 with 8 FP (4+ 4x½ + 4x½)	+2 (+1 Cx, +1 Height Advantage)	☒	☒	NE
245	22N5	22K10	A T-34/85 CE stopped DFIFire MA HE at Infantry 22K10 TH# 8 (range 6)	+1 (+3TEM, -2 ACQ)	☒	☒	Hit, ROF, -2 ACQ
246		23K10	attacked with 17 FP (85 mm HE hit)		☒	☒	NE
247	22N5	22K10	Stopped A T-34/85 DFIFire ROF MA HE at Infantry 22K10 TH# 8 (range 6)	+1 (+3TEM, -2 ACQ)	☒	☒	Miss
248	22N5	22K10	A T-34/85 CE stopped DFIFire at 22K10 infantry with BMG/CMG 6 FP	+3 TEM	☒	☒	NMC, German SAN
249			German SAN dr				NE
250	22K10		Broken DM Hamann 8-1 NMC		☒	☒	Wounds 8-1
251	22K10		I 658-LMG NMC		☒	☒	Break +4 DM
252	22K10		DM Broken H 658-PSK NMC		☒	☒	Casualty reduction
253	22H9	22K10	N 248, A 458-HMG DFIFire at 22K10 with 12FP	+3 TEM	☒	☒	PTC/NA, ROF
254	22H9	22K10	HMG ROF DFIFire at 22K10 with 6FP	+3 TEM	☒	☒	NE, ROF
255	22H9	22K10	HMG ROF DFIFire at 22K10 with 6FP	+3 TEM	☒	☒	NE, ROF
256	22H9	22K10	HMG ROF DFIFire at 22K10 with 6FP	+3 TEM	☒	☒	NE
ADVANCE FIRE PHASE							
257	23DD10	23EE10	B 658, G658 AFire at 23EE10 with 14 FP (6 x2 PBF x½ Afph +1 Assault fire x2)	+2 TEM	☒	☒	Cowers, attacks 8FP, 2MC
258	23EE10		B 248 2MC		☒	☒	Break +4 DM
259	23EE10		Broken G 458 2MC		☒	☒	Casualty reduction/ A10.31 G 458 Eliminated
260	23EE7		Pin E 658 PF usage dr	-1 (1945 rule C 13.31) +4 (+2 Pin case D, +2 Afph Case C3)			Panzerfaust available
261	23EE7		Pin E 658 PF fire. PF at T-34/85 in 23FF6 PF TH#8 range 1		☒	☒	Miss, -1PF
262	22O10	22T10	Blaze spreading DR to woods => 7		☒	☒	NE
263	22O10	22P9	Blaze spreading DR to wood building => 8	-2 Not directly attached	☒	☒	NE
264	22O10	22O9	Blaze spreading DR to wood building => 8	-2 Not directly attached	☒	☒	NE
ROUT PHASE							
265	23X7	23Y7	Broken DM C 658-PSK rout to Level 2				2 MF
266	22K10	23V10	Broken DM Hamann 8-1 Fail to rout				Hamann 8-1 Eliminated for failure to rout (SS vs Russian)
267	22K10	23V10	Broken DM I 658-LMG Fail to rout				I 658-LMG Eliminated for failure to rout (SS vs Russian), Abandon LMG
268	22K10	23V10	Broken DM H 658-PSK Fail to rout				H 658-PSK Eliminated for failure to rout (SS vs Russian), Abandoned PSK
269	23EE10	23DD10	Broken DM B 248 Fail to rout				No Quarter, B 248 Eliminated
ADVANCE PHASE							
270	23AA4	23AA3	F 348, A 658-LMG advance to 23AA3				(take control VC)
271	23AA4	23Y7	Winter 9-1 advance to 23Y7				(take control VC)
CLOSE COMBAT PHASE							
272	23AA3		F 348, A 658-LMG gain ?				
Turn 3							
Serial	Initial Hex location	Target hex Location	Event	DRM	Red Die	White Die	Result
RUSSIAN TURN							
RALLY PHASE							
273			Wind change DR		☒	☒	NE
274	23Z8		Malf PAK 43 repair attempt dr				NE
275	22K7		Broken H 248 first self-rally attempt	Leader, - 1 RA in Building)	☒	☒	fail

Serial	Initial Hex location	Target hex Location	Event	DRM	Red Die	White Die	Result
276	23Y7		Broken DM C 658-PSK/Winter 9-1 rally attempt	+3 (+4 DM, -1 LEAD)	☒	☒	fail, remove DM
PREP FIRE PHASE							
277	23FF6	23EE7	Stopped C T-34/85 /AL Tomilin 9-1 PFire at 23EE7 with BMG/CMG with 12 FP (6FP x 2 PPF)	+2 (+3 TEM, -1 LEAD)	☒	☒	1MC
278	23EE7		E 658 1MC		☒	☒	Pin
279	23FF6	23EE7	Stopped/CE C T-34/85 /AL Tomilin 9-1 PFire at infantry 23EE7 with MA AP TH# 8 range 1	-0 TH (+3 TEM, PBR -2, -1 LEAD)	☒	☒	Hit, -1 ACQ
280	23EE7		attacked with 17 FP (85 mm HE hit)		☒	☒	2MC
281	23EE7		E 658 2MC		☒	☒	Pass
282	23U10	23Y8	Stopped/CE B T-34/85 PFire at 23X7 infantry on Rooftop with MA HE TH# 8 range 4	+1 Height Advantage	☒	☒	Miss, MA Malfunction
283	23U10	23Y8	Stopped/CE B T-34/85 PFire at 23X7 infantry on Rooftop with BMG/CMG with 6 FP	+1 Height Advantage	☒	☒	NE
MOVEMENT PHASE							
284	22N5	22F9	Stopped/CE A T-34/85 move to 22F9 CA E10-F10 stop				16 MP
285	22F9	23BB4	Stopped/CE A T-34/85 Bounding fire at HT in 23BB4 with MA AP TH# 9 range 7	+5 TH (+2 Case B, +2 Case C, +1 Target size)	☒	☒	Miss, -1 ACQ
286	23V10	22L9	Nemchikov 149 move to 22L9				2 MF
287	22M10	22L7	Wounded Maletski 8-1 move to 22L7				3 MF
288	22D6	22H9	I 458/Levkov 8-0 move to 22H9				6 MF
289	23U8	23U7	F 458, D458-DC, E 447 lose Cx dash to U7				1MF
290	23Y8	23U7	D 658-MMG DFFire at 23U7 with 5 FP (11 FP x½ area Dash, FRD)	-2 (-1 FFMO, -1 FFNAM)	☒	☒	1MC
291	23U7		F 458 1MC		☒	☒	Break +4 DM
292	23U7		D458-DC 1MC		☒	☒	Break +4 DM
293	23U7		E 447 1MC		☒	☒	Pass, continue move
294	23U7	23V6	E 447 move 23V6				3 MF
295	22P9	23U8	J 458-FT/Kamensky 8-0 lose ? move to 23U8				6 MF
296	22P8		Pavlovski 149 Lose ? move to 23R10 spend 1 MF to recover abandoned LMG				4 MF
297	23R10		Pavlovski 149 recovery dr abandoned LMG				LMG recovered
298	23R10	23R9	Pavlovski 149-LMG move to 23R9				5 MF
299	23S8		L 458-DC lose Cx move to 23U6				2 MF
300	23Y8	23U7	L 458-DC attacked with Residual 2 FP	-2 (-1 FFMO, -1 FFNAM)	☒	☒	NE, continue move
301	23U7	23V6	L 458-DC lose Cx move to 23V6				4 MF
302	23R10	23U9	Reinforcement O 628, M 628-DC, N 628-LMG/Korskii 8-1 enter via 23R10 move to Building 23U9				5 MF 10 MP (2½ MP delay in LOS 23BB4)
303	23R7		Reinforcement D IS-2m enter via road 23R7 move to 23Y3 stop				
304	23Y3	23BB4	Stopped/CE D IS-2m Bounding fire at HT in 23BB4 with MA AP TH# 10 range 3	+5 TH (+2 Case B, +2 Case C, +1 Target size)	☒	☒	Miss, -1 ACQ
305	23Y3	23AA3	Stopped/CE D IS-2m Bounding fire at 23AA3 with CMG 1 FP (4 FP x½ conceald x½ Bounding fire)	+3 TEM	☒	☒	NE
306	23R7	23FF6	Reinforcement E IS-2m enter via 23GG8 move to 23FF6				5 MP
307	23EE7		Pin E 658 PF usage dr	-1 (1945 rule C 13.31)			No opportunity to fire PF 9½MP (5MP + 4½MP)
308	23FF6		E IS-2m continue move to 23FF6 CA AA6-BB5				
309	23Z7		Rooftop J 658-LMG PF usage dr	-1 (1945 rule C 13.31)			Panzerfaust available
310	23Z7	23BB6	Rooftop J 658-LMG DFFire PF at E IS-2m in 23BB6 PF TH#6 range 2	+4 (+2 Case J)	☒	☒	Miss, -1PF 13MP (5MP + 4½MP+3½ stop and delay)
311	23BB6	23BB5	E IS-2m continue move to 23BB5 stop CA AA5-BB4				
312	23BB5	23BB4	Stopped/CE E IS-2m Bounding fire at HT in 23BB4 with MA AP TH# 10 range 1	+3 TH (+2 Case B, +2 Case C, +1 Target size, -2 Case L PBR)	☒	☒	Hit, Hull D SPW 251/1 Eliminated, Burning Wreck, Inherent Crew Eliminated
313	23BB5	23BB4	Stopped/CE E IS-2m AP TK# 25 (final TK# =25)	-0 (+1 Range, -1 AF,)	☒	☒	
314	23R8	23T7	Reinforcement P 628 enter via Bypass 23R18 move to 23T7				3 MF
315	23GG9	23GG9	Reinforcement Q 628-LMG enter via 23GG9 move to				1 MF
316	23EE7	23GG9	Pin E 658 DFFire at 23T7 with 3FP (6FP x½ Pin firer)	-0 (-1 FFNAM, +1 Wreck Hindrance)	☒	☒	1MC
317	23GG9		Q 628-LMG 1MC		☒	☒	Break +4 DM
318	22H9	23X10	N 248 dash to 23X10				3 MF
319	22H9	22I9	A 458-HMG move to 22I9				2 MF
320	23Z7	22I9	Rooftop J 658-LMG DFFire at 22I9 with 6 FP (Can't use LMG since fired a PF earlier)	+1 (2 TEM, -1 FFNAM)	☒	☒	1 KIA, 458 Eliminated
321	22I9		HMG SW Destruction dr 6FP				1MC, NE
DEFENSIVE FIRE PHASE							
322	23Z8	23AA10	K 228 WA2 DFFire at 23AA10 with 2FP	+2 TEM +0 (+1 HS, -1 (1945 rule C 13.31))	☒	☒	NE
323	23AA3		F 348 lose ? PF usage dr				348 Pin

Serial	Initial Hex location	Target hex Location	Event	DRM	Red Die	White Die	Result
324	23AA3		A 658 lose ? PF usage dr	-1 (1945 rule C 13.31)	☒	☐	658 Pin
325	23DD10	23AA10	B 658, G658 Dfire at 23AA10 with 12FP	+2 TEM	☒	☐	1MC
326	23AA10		O 248 1MC		☒	☐	Pass, German SAN
327			German SAN dr			☐	Activate
328	22H7		Sniper Direction DR		☒	☐	Located 22F6 => 22F9
329	22F9		A T-34/85 CE Stun				
ADVANCE FIRE PHASE							
330	23U9	23Y8	O 628, M 628-DC, N 628-LMG/Korskii 8-1 Adfire at 23Y8 with 5½ FP ((3x6FP)18 x½ AFph x½ Long Range + LMG x½ AFph)	+0 (+1 Height Advantage, -1 LEAD)	☒	☐	NE
331	23AA10	23C28	O 248 OPfire to 23CC7 with 2FP	+2 TEM	☒	☐	NE
332	22O10	23T10	Blaze spreading DR to woods => 7		☒	☐	Flame spreadto 23T10
333	22O10	22O9	Blaze spreading DR to wooden building => 8	-2 Not directly attached	☒	☐	Blaze Spread to 22O9
334	22O10	22P9	Blaze spreading DR to wood building => 8	-2 Not directly attached	☒	☐	NE
335	22O10	22O9	Blaze spreading DR to wood building => 8	-2 Not directly attached	☒	☐	NE
ROUT PHASE							
336	23GG9	23FF9	Broken DM Q 628-LMG rout to 23FF9				2 MF
337	23U7	23U8	Broken DM F 458, D458-DC rout to 23U8				2 MF
ADVANCE PHASE							
338	23V6	23W6	E 447, L 458-DC advance to 23W6				
339	22H9	22I9	I 458/Levkov 8-0 advance to 22I9				
340	23R9	23S9	Pavlovski 149-LMG advance to 23S9				
341	23X10	23X9	N 248 advance to 23X9				
342	22L7	22K7	Wounded Maletski 8-1 advance to 22K7				
CLOSE COMBAT PHASE							
German Turn							
RALLY PHASE							
343			Wind change DR		☒	☐	NE
344	22I9		I 458/8-0 HMG recovery attempt			☐	HMG recovered
345	23Z8		Malf PAK 43 repair attempt dr		☒	☐	PAK 43 destroyed
346	23U10		B T-34/85 MA repair attempt			☐	NE
347	23Y7		Broken C 658-PSK/Winter 9-1 rally attempt	-1 LEAD	☒	☐	Rally
348	22K7		Broken H 248 Wounded Maletski 8-1 rally attempt	-1 LEAD	☒	☐	Fail
349	23U8		Broken DM F 458/Kamensky 8-0 rally attempt	+3 (+4 DM, -1 RA Building)	☒	☐	Rally
350	23U8		Broken DM D 458-DC/Kamensky 8-0 rally attempt	+3 (+4 DM, -1 RA Building)	☒	☐	Fail, Remove DM
PREP FIRE PHASE							
351	23EE7		E 658 PF usage dr	-1 (1945 rule C 13.31)		☐	Panzerfaust available
352	23EE7	23FF6	E 658 PFire PF at C T-34/85 in 23FF6 PF TH#8 range 1	+2 (+2 Afph Case C3)	☒	☐	Miss, -1PF
353	23EE7		E 658 PF usage dr (2nd PF)	-1 (1945 rule C 13.31)		☐	Panzerfaust available
354	23EE7	23FF6	E 658 PFire PF at C T-34/85 in 23FF6 PF TH#8 range 1 (forfeit IFP)	+2 (+2 Afph Case C3)	☒	☐	Hit, Hull Hit, Russian SAN, -1 PF
355			Russian SAN dr			☐	NE /SSR
356			SSR Partisan Creation dr			☐	Semenov Hero Created
357			Semenov Hero location DR		☒	☐	Located in 22K6
358	22K6		TI Semenov Hero located in Building 22K6				
359	23EE7	23FF6	Stopped/CE C T-34/85 AP TK# 31 (final TK# =20)	-11 (- 11 AF,)	☒	☐	CT-34/85/ AL Tomilin 9-1 Eliminated, Burning Wreck, Inherent Crew eliminated
360	23AA3		A 658-LMG PF usage dr	-1 (1945 rule C 13.31)		☐	Panzerfaust available
361	23AA3	23Y3	A 658-LMG PFire PF at D IS-2m in 23Y3 PF TH#6 range 2	+2 (+2 Afph Case C3)	☒	☐	Miss, -1PF
362			A 658-LMG PF usage dr (2nd PF)	-1 (1945 rule C 13.31)		☐	Panzerfaust available
363	23AA3	23Y3	A 658-LMG PFire PF at D IS-2m in 23Y3 PF TH#6 range 2 (forfeit IFP)	+2 (+2 Afph Case C3)	☒	☐	Miss, -1PF, Russian SAN
364			Russian SAN dr			☐	Activate
365	22K10	22P7	Sniper Direction DR		☒	☐	Located 22P7 => 23Z8
366	23Z8		Sniper random selection König 8-0 dr			☐	
367	23Z8		Sniper random selection K 228 dr			☐	
368	23Z8		König 8-0 selection				König 8-0 eliminated by sniper
369	23Z8		K 228 LLMC		☒	☐	Break +4 DM
370	23Y8	23U9	Rooftop D 658-MMG PFire at 23U9 with 11FP	+2 TEM	☒	☐	2MC, ROF

Serial	Initial Hex location	Target hex Location	Event	DRM	Red Die	White Die	Result
371	23U9		Korskii 8-1 2MC		+	☐	Pass
372	23U9		M 628-DC 2MC		☐☐	☐☐	Break +4 DM
373	23U9		N 628-LMG 2MC		☐☐	☐☐	Break +4 DM
374	23U9		O 628 2MC		+	☐	Pass
375	23Y8	23U9	Rooftop D 658-MMG PFire ROF at 23U9 with 5FP	+2 TEM	☐☐	☐☐	NE
MOVEMENT PHASE							
376	23AA3	23CC2	F 348 move to 23CC2				3 MF (take control VC)
377	23Y7	23Y6	C 658-PSK/Winter 9-1 Assault move to 23Y6 Rooftop				6 MF
378	23W6	23Y6	E 447, L 458-DC Dfire at 23Y6 with 8FP	+1 Height advantage	+	☐	2MC, German SAN
379			German SAN dr			☐	Activate
380	22F9	22F4	Sniper Direction DR		☐☐	☐☐	Located 22F4 => 22K7
381	22K7		Sniper random selection Wounded Maletski 8-1 dr		☐☐		
382	22K7		Sniper random selection Broken H 347 dr		☐☐		
383			Wounded Maletski 8-1 selection				Wounded Maletski 8-1 eliminated by sniper
384	22K7		Broken H 248 LLMC	+1 (Inverted lead LLMC)	☐☐	☐☐	Eliminated Casualty Reduction
385	23Y6		Winter 9-1 2MC		☐☐	☐☐	Pass, Russian SAN
386	23Y6		C 658-PSK 2MC	-1 LEAD	+	☐	Pin
387			Russian SAN dr			☐☐	NE /SSR
388			SSR Partisan Creation dr			☐☐	A HS 127 Partisan Created
389			A HS 127 location DR		☐☐	☐☐	Located in 22M10
390	22M10		TI B HS 127 partisan is Located 23M10				
391	23Z7	23Y7	J 658-LMG assault move to 23Y7 Rooftop				4 MF
392	23DD10	23EE10	B 658, G 658 assault move to building 23EE10				4 MF
DEFENSIVE FIRE PHASE							
393	23AA10	23Z8	O 248 Dfire to 23Z8 with 2FP	+2 TEM Wall	+	☐☐	NE
394	23X9	23Z8	WA N 248 Dfire to 23Z8 with 2FP		+	☐☐	PTC, target already Broken
395	22I9	23Y8	I 458-HMG/Levkov 8-0 Dfire at 23Y8 Rooftop with 10 FP	+1 Height advantage	+	☐☐	2MC, ROF, German SAN
396			German SAN dr			☐☐	NE
397	23Y8		D 658-MMG 2MC		+	☐	Pass
398	22I9	23Y8	I 458-HMG ROF fire at 23Y8 Rooftop with 5FP	+1 Height advantage	+	☐☐	NE, ROF
399	22I9	23Y8	I 458-HMG ROF fire at 23Y8 Rooftop with 5FP	+1 Height advantage	+	☐☐	NE, ROF
400	22I9	23Y8	I 458-HMG ROF fire at 23Y8 Rooftop with 5FP	+1 Height advantage	+	☐☐	NE, ROF
401	22I9	23Y8	I 458-HMG ROF fire at 23Y8 Rooftop with 5FP	+1 Height advantage	☐☐	☐☐	NE
402	23U8	23Y8	J 458-FT, F 458-DC/Kamensky 8-0 Dfire at 23Y8 with 8FP	+1 Height advantage	☐☐	☐☐	NE
403	23U9	23Y8	O 628/Korskii 8-1 DFFire at 23Y8 with 3 FP (6FP x ½ long range)	+0 (+1 Height advantage, -1 LEAD)	☐☐	☐☐	NE
404	23Y3	23AA3	Stopped/CE D IS-2m DFFire at infantry in 23AA3 with MA AP TH# 8 range 2	+3 TH (+3 TEM)	☐☐	☐☐	Miss, -1 ACQ
405	23Y3	23AA3	Stopped/CE D IS-2m DFFire at 23AA3 with CMG/BMG 5FP	+3 TEM	☐☐	☐☐	NE
406	23BB5	23AA3	Stopped/CE E IS-2m DFFire at infantry in 23AA3 with MA AP TH# 8 range 3	+5 TH (+3 TEM, +2 Blaze hindrance)	☐☐	☐☐	Miss, -1 ACQ
407	23BB5	23AA3	Stopped/CE E IS-2m DFFire at 23AA3 with CMG/BMG 5FP	+5 (+3 TEM, +2 Blaze hindrance)	☐☐	☐☐	NE
408	23BB5	23AA3	Stopped/CE B T-34/85 DFFire at 23Y8 with CMG/BMG 6FP	+3 TEM	☐☐	☐☐	NE
ADVANCE FIRE PHASE							
409	23EE10	23FF9	B 658, G 658 ADFire at 23FF9 with 14 FP (6 x2 PBF x½ Afph +1 Assault fire x2)	+1 TEM	+	☐☐	PTC, target already Broken
409	23Y6	23W6	Pin C 658-PSK/Winter 9-1 ADFire to with 2½FP (6 x½ Afph x½Pin +1 Assault fire)	+1 (+2 TEM, -1 LEAD)	☐☐	☐☐	NE
410	23T10	22P9	Flame spreading DR to woods => 7		☐☐	☐☐	Blaze Spread to 23T10
411	22O10	22P9	Blaze spreading DR to wood building => 8	-2 Not directly attached	+	☐☐	NE
412	22O10	22O9	Blaze spreading DR to wood building => 8	-2 Not directly attached	+	☐☐	NE
ROUT PHASE							
413	23Z8	23Y7	Broken DM K 228 rout to 23Y7				4 MF
414	23FF9	23GG9	Broken DM C 458-LMG, E 458-LMG Low crawl in 23GG9				4 MF
ADVANCE PHASE							
415	23CC2	23DD1	F 348 Advance in 23DD1				
416	23EE10	23FF9	G 658 Advance in 23DD1				
417	23EE10	23DD10	B 658 Advance in 23DD10				
418	23EE7	23DD10	E 658 Advance in 23DD7				

Serial	Initial Hex location	Target hex Location	Event	DRM	Red Die	White Die	Result
419	23AA3	23AA2	A 658-LMG Advance in 23AA2				
420	23Y7	23Y6	J 658-LMG Advance to Rooftop 23Y6				
CLOSE COMBAT PHASE							
421	23AA2		A 658-LMG Gain ?				
422	23DD1		F 348 Gain ?				
423	23DD7		E 658 Gain ?				
424	22M10		B 127 Gain ?				
425	22K6		Semenov 149 Gain ?				



Turn 4

Serial	Initial Hex location	Target hex Location	Event	DRM
RUSSIAN TURN				
RALLY PHASE				
426			Wind change DR	☐ ☐ NE
427	23U10		B T-34/85 MA repair attempt	☐ ☐ NE
428	23GG9		Broken DM Q 628-LMG first Attacker self rally attempt	+5 (+4 DM, +1 No Leader) ☐ ☐ Self-Rally
429	23U8		Broken D 458-DC/Kamensky 8-0 rally attempt	-1 (-1 RA Building) ☐ ☐ Rally, HOB
430	23U8		D 458-DC HOB DR	+2 (+1 broken, +2 Russian, -1 Elite) ☐ ☐ D 458-DC Berserk
431	23U9		Broken DM M 628-DC/Korskii 8-1 rally attempt	+2 (+4 DM, -1 RA Building, -1 LEAD) ☐ ☐ Fail, Remove DM
432	23U9		Broken DM N 628-LMG/Korskii 8-1 rally attempt	+2 (+4 DM, -1 RA Building, -1 LEAD) ☐ ☐ Fail, Remove DM
433	23Y7		Level 0 Broken DM K 228 self rally attempt	+5 (+4 DM, +1 No Leader) ☐ ☐ Fail, Remove DM
PREP FIRE PHASE				
434	23GG9	23FF9	Q 628-LMG Pfire at 23FF9 with 16FP (8FP x2 PBR)	+1 TEM ☐ ☐ NMC, Covers IFT=> 12FP
435	23FF9		G 658 NMC	☐ ☐ Pin
436	22I9	23Y8	I 458-HMG/Levkov 8-0 Pfire at 23Y8 Rooftop with 10FP	+1 Height advantage ☐ ☐ 2MC, ROF, German SAN
437			German SAN dr	☐ ☐ NE
438	23Y8		D 658-MMG 2MC	☐ ☐ Casualty Reduction, D 348
439	22I9	23Y8	I 458-HMG ROF fire at 23Y8 Rooftop with 5FP	☐ ☐ Broken DM
440	22I9	23Y8	I 458-HMG ROF fire at 23Y8 Rooftop with 5FP	+1 Height advantage ☐ ☐ NE, ROF
441	23Y8		D 658-MMG 2MC	+1 Height advantage ☐ ☐ 2MC, ROF
442	22I9	23Y8	I 458-HMG ROF fire at 23Y8 Rooftop with 5FP	☐ ☐ Pass
				+1 Height advantage ☐ ☐ NE
MOVEMENT PHASE				
443	23U8	23Y7	Berserk D 458 charge to 23Y8 Rooftop but upon entering level 0 23Y7 Broken 228 become in LOS enter in CC with Broken K 228	☐ ☐ enter CC
444	22M10	22K10	? B 127 lose ? move to 23V10 move to 22K10, spend 1 MF to recover abandoned LMG	☐ ☐ 4 MF

Serial	Initial Hex location	Target hex Location	Event	DRM	Red Die	White Die	Result
445	22K10		B 127 recovery dr abandoned LMG		☒	☒	Fail
446	22K6	22M10	? Semenov 149 move to 22M10				6 MF
447	23X9	23X7	N 248 move to Factory level 0 23X7				4 MF
448	23U8	23X6	J 458-FT, F 458-DC/Kamensky 8-0 move to level 0 23X6				6 MF
449	23Y6	23X6	Rooftop C 658-PSK/Winter 9-1 DFFire at 23X6 Level 0 with 12 FP (x2 PBR)	-1 (+1 TEM factory, -1 FFNAM, -1 LEAD)	☒	☒	1MC
450	23Y7		Kamensky 8-0 1MC		☒	☒	Break +4 DM
451	23Y7		J 458-FT 2MC (FT Vulnerability -1 DR)		☒	☒	Break +4 DM
452	23Y7		F 458-DC 1MC		☒	☒	Pin
453	23S9	23w6	Pavlovski 149-LMG move to building 23W6				6 MF
454	23T7	23W6	P 628 move to building 23W6				4 MF
455	23U9	23V6	O 628 move to building 23V6				4 MF
456	23W6	23X7	E 447, L 458-DC move to Factory level 0 23X7				3 MF
457	23Y6	23X7	J 658-LMG on Rooftop DFFire at 23X7 level 0 with 9 FP	+0 (+1 TEM factory, -1 FFNAM)	☒	☒	2MC, ROF
458	23X7		E 447 2MC		☒	☒	Pass, German SAN
459	23X7		L 458-DC 2MC		☒	☒	Pass
460			German SAN dr				NE
461	23Y6	23X7	J 658-LMG ROF 23X6 with 6 FP (3 FP x2 PBR)	+0 (+1 TEM factory, -1 FFNAM)	☒	☒	NE
462	23U10	23W3	B CE T-34-85 (MA Malf) start and move to 23W3 and stop CA X3-W4				15 MP
463	23W3	23Y6	B Stopped CE T-34-85 (MA Malf) BFire with CMG/BMG at to 23Y6 Rooftop with 3 FP (6 FP x½ BFire)	+1 Height advantage	☒	☒	NE
464	23Y3		CE IS-2m start and change CA within hex to Z3-Y4 delay then stop.				12 MP
465	23Y3	23Y6	D Stopped CE IS-2m BFire with CMG/BMG at to 23Y6 Rooftop with 3 FP (6 FP x½ BFire)	+1 Height advantage	☒	☒	NE
466	23Y6	23Y3	C 658-PSK DFFire PSK at Tank in 23Y3 range 3 TH# 7 (After starting 1 MP)		☒	☒	Hit, Hull D IS-2m Eliminated, Burning Wreck, Inherent Crew eliminated
467	23Y6		Stopped/CE D IS-2m AP TK# 26 (final TK# =15)	-11 (- 11 AF,)	☒	☒	16 MP
468	22F9	23Z9	A T-34/85 start become CE move to (bypass in 22H9) delay and stop in 23Z9 CA AA9-AA10	+4 (+3 TEM, +1 Stun recover)	☒	☒	
469	23Z9	23DD10	Stopped CE A T-34/85 BFire with CMB/BMG at 23DD10 with 3 FP (6 FP x½ BFire)		☒	☒	BMG Malfunction
470	23Z9		CMG Malfunction Random Selection dr				
471	23Z9		BMG Malfunction Random Selection dr				
472	23Z9	23DD10	Stopped CE A T-34/85 BFire with MA HE at Infantry 23DD10 range 4 TH # 8	+7 TH (+2 Case B, +2 Case C, +3 TEM)	☒	☒	Miss, -1 ACQ
473	23BB5	23X2	CE E IS-2m start move to 23X2 Z3-Y4 delay change CA Y3-X3 then stop.				13MP
474	23X2	23Y6	Stopped CE E IS-2m BFire with CMB/BMG at Rooftop 23Y6 with 2½ FP (5 FP x½ BFire)	+1 Height advantage +5 TH (+2 Case B, +2 Case C, +1 Height advantage)	☒	☒	NE
475	23X2	23Y6	Stopped CE E IS-2m BFire with MA HE at Rooftop Infantry 23Y6 range 4 TH # 8		☒	☒	Hit, ROF, -1 ACQ
476	23Y6		attacked with 24 FP (122 mm HE hit)		☒	☒	1MC
477	23Y6		Winter 9-1 1MC		☒	☒	Pass
478	23Y6		J 658-LMG 1MC	-1 LEAD	☒	☒	Pass
479	23Y6		C 658-PSK 1MC	-1 LEAD	☒	☒	Pass, Russian SAN
480			Russian SAN dr				Activate
481	23Z8	23Y8	Sniper Direction DR		☒	☒	Located 23Z8 => 23Y8
482	23Y8						Pin Broken D 658
DEFENSIVE FIRE PHASE							
483	23FF9	23GG9	Pin G 658 DFIFire at 23GG9 with 6 FP (6 FP x½ Pin, x2 PBR)		☒	☒	NMC
484	23GG9		Q 628-LMG NMC		☒	☒	Pin
485	23GG9		Broken C 458-LMG NMC		☒	☒	Pass, +4DM
486	23DD7	23GG9	? E 658 lose ? DFIFire at 23GG9 with 6 FP		☒	☒	Cowers, NE
487	23DD10	23AA10	B 658 DFIFire at 23AA10 with 6 FP	+2 TEM	☒	☒	NMC
488	23AA10		O 248 NMC		☒	☒	Pass
ADVANCE FIRE PHASE							
489	23W6	23Y6	P 628 ADFire at Rooftop 23Y6 with 4 FP (6 x½ AFph +1 Assault fire)	+1 Height advantage	☒	☒	NE
490	23X6-23X7	23Y6	FG 23X6 Level 0 F 458-DC, 23X7 Level 0 E 447-LMG, L 458-DC, N 248 ADFire at Rooftop 23Y6 with 11 FP 4 FP (F 458 4 FP x½ x2 PBR)+ 5FP (E 447 LMG + L 458-DC 10 FP x½ AFph) + 2 FP (N 248 Opfire)	+1 Height advantage	☒	☒	Cowers IFT=> 6 FP, NMC
491	23Y6		Winter 9-1 NMC		☒	☒	Pass
492	23Y6		J 658-LMG NMC	-1 LEAD	☒	☒	Pass, Russian SAN
493			Russian SAN dr				Activate
494	23Y8	23Y7	Sniper Direction DR		☒	☒	Located 23Z8 => 23Y7

Serial	Initial Hex location	Target hex Location	Event	DRM	Red Die	White Die	Result
495	23Y7						Pin Broken K 348
496	23Y6		C 658-PSK NMC	-1 LEAD	☐☐	☐☐	Pass
497	23X6	23Y6	Pavlovski 149-LMG ADFire at Rooftop 23Y6 with 3 FP (3 x½ Afph x2 PBR)	+1 Height advantage	☐☐	☐☐	NE
498	23AA10	23DD10	O 248 OPPFire at 23DD10 with 2 FP	+3 TEM	☐☐	☐☐	PTC
499	23DD10		B 658 PTC		☐☐	☐☐	Pin
500	22O10	22P9	Blaze spreading DR to wood building => 8	-2 Not directly attached	☐☐	☐☐	NE
501	22O10	22O9	Blaze spreading DR to wood building => 8	-2 Not directly attached	☐☐	☐☐	NE
502	23T10	22M10	Blaze spreading DR to stone building => 9	-2 Not directly attached	☐☐	☐☐	NE
ROUT PHASE							
503	23GG9	23GG10	Broken DM C 458-LMG rout to 23GG10 (suffer interdiction from 23FF9) NMC		☐☐	☐☐	Casualty Reduction to 248
504	23GG10	22A10	Broken DM C 248-LMG rout to 22A10 (suffer interdiction from 23FF9) NMC		☐☐	☐☐	Pass
505	22A10	22B9	Broken DM C 248-LMG rout to 22B9				4 MF
506	23Y7	23U8	Broken DM Kamensky 8-0 rout to 23U8				6 MF
507	23Y7	23U8	Level 1 Broken DM J 458-FT rout to 23U8				6 MF
ADVANCE PHASE							
509	22I9	22H8	I 458-HMG/Levkov advance in 22H8				
510	23V6	23V5	O 628 advance in 23V5				
511	23X6	23W6	Pavlovski 149-LMG advance in 23W6				
512	23Y7	23Z6	Level 0 L 458-DC advance in Level 0 23Z6				
513	23AA10	23Z10	O 248 advance in 23Z10				
514	22M10	23V10	? Semenov 149 advance in 23V10				
515	23X7	23X6	Level 0 E 447-LMG advance to Level 0 23X6				
516	23X7	23Y8	Level 0 L 458-DC advance to Level 0 23Y8				
517	23X7	23Y7	Level 0 N 248 advance to Level 0 23Y7				Join CC
CLOSE COMBAT PHASE							
518	23Y7		Russian ambush dr			☐☐	Russian ambush
519	23Y7		German ambush dr	+1 Broken		☐☐	
520	23Y7		Berserk D 458, N 248 CC attack ambush Broken K 228 ratio 3-1 CC# 8	- 3(-1 Ambush, -2 vs broken)	☐☐	☐☐	K 228 eliminated in CC, D 458 Lose berserk
521	23Y7		Broken K 228 defend ambush CC Berserked D 458, N 248 Ambushed ratio 1-4 CC# 3	+ 1 Ambushed	☐☐	☐☐	NE
German Turn							
RALLY PHASE							
522			Wind change DR		☐☐	☐☐	Wind gust
523			Wind direction dr			☐☐	Flame placed in 22M10 & 22L9
524	23Y8		Rooftop Broken DM D 348 first Attacker self rally attempt	+5 (+4 DM, +1 No Leader)	☐☐	☐☐	Fail
525	23U8		Broken DM Kamensky 8-0 self rally attempt	+3 (+4 DM, -1 RA building +2 (+4 DM, -1 RA building, -1 LEAD)	☐☐	☐☐	Fail
526	23U9		Broken DM M 628-DC/Korskii 8-1 rally attempt	+2 (+4 DM, -1 RA building, -1 LEAD)	☐☐	☐☐	Rally
527	23U9		Broken DM N 628-LMG/Korskii 8-1 rally attempt	+2 (-1 Elite, +1 Broken, +2 Russian)	☐☐	☐☐	Rally, HOB Hero creation Dimitrov 149 & N 628 Becomes Fanatic
528	23U9		N 628-LMG HOB DR			☐☐	Successfull
529	22K10		B 127 LMG Recovery attempt			☐☐	Fail
530	23W3		B T-34/85 MA Repair attempt			☐☐	Fail
PREP FIRE PHASE							
531	23FF9	23GG9	G 658 PFire at 23GG9 with 12 FP (6 FP x2 PBR)		☐☐	☐☐	NMC
532	23GG9		Q 628 LMG NMC		☐☐	☐☐	Pass, German SAN
533			German SAN dr			☐☐	NE
534	23Y6	23X2	Rooftop encircled C 658-PSK/Winter 9-1 PFire PSK at tank in 23X2 range 4 TH#4	+0 (+1 encircled, -1 LEAD)	☐☐	☐☐	Miss
535	23Y6	23X6	Rooftop encircled C 658-PSK PFire at 23X6 level 0 with 12 FP (6FP x2 PBR)	+2 (+1 encircled, +1 TEM)	☐☐	☐☐	NMC
536	23X6		F 458-DC NMC		☐☐	☐☐	Pass
537	23X6		E 447-LMG NMC		☐☐	☐☐	Pin
538	23Y6	23X6	Rooftop encircled J 658-LMG PFire at 23X6 level 0 with 18 FP (9FP x2 PBR)	+2 (+1 encircled, +1 TEM)	☐☐	☐☐	1MC
539	23X6		F 458-DC 1MC		☐☐	☐☐	Break +4 DM
540	23X6		E 447-LMG NMC		☐☐	☐☐	Pass
541	23DD7	23GG9	F 658-PSK PFire at 23GG9 with 6 FP		☐☐	☐☐	1MC, Russian SAN
542			Russian SAN dr			☐☐	Activate
543	23Y7		Sniper Direction DR		☐☐	☐☐	Located 23Y7 => 23FF9

Serial	Initial Hex location	Target hex Location	Event	DRM	Red Die	White Die	Result
544	23FF9						Pin G 658
545	23GG9		Q 628-LMG 1MC		🎲	🎲	Break +4 DM
MOVEMENT PHASE							
546	23DD10	22C9	B 658 move to 22C9				4 MF
547	23AA2	23Z10	? A 658-LMG assault move to 23Z1				4 MF
548	23DD1	23DD2	? F 348 assault move to 23DD2				4 MF
DEFENSIVE FIRE PHASE							
549	23X2	23Y6	Stopped CE E IS-2m BFire with MA HE at Rooftop Infantry 23Y6 range 4 TH # 8	+0 TH (-1 ACQ, +1 Height advantage)	🎲	🎲	Hit, -2 ACQ
550	23Y6		attacked with 24 FP (122 mm HE hit)		🎲	🎲	3MC
551	23Y6		Winter 9-1 3MC		🎲	🎲	Break +4 DM (forfeit LLTC all broken)
552	23Y6		J 658-LMG 3MC		🎲	🎲	Break +4 DM, Russian SAN
553			Russian SAN dr				Activate
554	23FF9		Sniper Direction DR		🎲	🎲	Located 23FF9 => 23Y6
555	23Y6		Broken DM Winter 9-1 random selection		🎲	🎲	Broken DM Winter 9-1 Wounded
556	23Y6		Broken DM J 658-LMG random selection				
557	23Y6		C 658-PSK random selection				
558	23Y6		C 658-PSK 3MC		🎲	🎲	Break +4 DM, Russian SAN
559			Russian SAN dr				Activate
560	23Y6		Sniper Direction DR		🎲	🎲	Located 23Y6 ==> 23BB7 => 23Y6
561	23Y6		Broken DM Wounded Winter 9-1 random selection				
562	23Y6		Broken DM J 658-LMG random selection		🎲	🎲	Pin, No effect Broken
563	23Y6		Broken DM C 658-PSK random selection				
564	23X2	23Y6	Stopped CE E IS-2m DFIFire with CMB/BMG at Rooftop 23Y6 with 5 FP	+1 Height advantage	🎲	🎲	NE
565	23X6-23W6	23Y6	FG 23X6 Level 0 E 447-LMG, 23W6 P 628, Pavlovski 149-LMG, DFIFire at Rooftop 23Y6 with 21 FP 9FP (P 628+ Pavloski-LMG 3 FP)+ 12FP (E 447-LMG 6 FP x2 PBR)	+1 Height advantage	🎲	🎲	NE
566	23W3	23Y6	B Stopped CE T-34-85 (MA Malf) DFIFire with CMG/BMG at to 23Y6 Rooftop with 6 FP	+1 Height advantage	🎲	🎲	NMC
567	23Y6		Broken DM Wounded Winter 9-1 NMC		🎲	🎲	Pass
568	23Y6		Broken DM J 658-LMG NMC		🎲	🎲	Pass
569	23Y6		Broken DM C 658-PSK		🎲	🎲	Pass, Russian SAN
570			Russian SAN dr				Activate
571	23Y6		Sniper Direction DR		🎲	🎲	Located 23Y6 ==> 23U4 => 23Y6
572	23Y6		Broken DM Wounded Winter 9-1 random selection		🎲	🎲	Eliminate wounded Winter 9-1
573	23Y6		Broken DM J 658-LMG random selection				
574	23Y6		Broken DM C 658-PSK random selection				
575	23Y6		Broken DM J 658-LMG LLMC	+1 Negative Leader DRM	🎲	🎲	Pass, Russian SAN
576	23Y6		Broken DM C 658-PSK LLMC	+1 Negative Leader DRM	🎲	🎲	Casualty Reduction to 348
577			Russian SAN dr				NE
578	23Y7	23Y6	Level 0 D 458, N 248 fire at Rooftop 23Y6 with 12 FP (6 FP x2 PBR)	+1 Height advantage	🎲	🎲	1MC
579	23Y6		Broken DM J 658-LMG 1MC		🎲	🎲	Pass, Russian SAN
580			Russian SAN dr				Activate
581	23Y6		Sniper Direction DR		🎲	🎲	Located 23Y6 ==> 23W5 => 23Y6
582	23Y6		Broken DM J 658-LMG random selection				Casualty Reduction to 348
583	23Y6		Broken DM C 348-PSK random selection				
584	23Y6		Broken DM C 348-PSK 1MC		🎲	🎲	Eliminated Casualty Reduction K/3, ROF, Casualty Reduction to 348
585	23U9	23Y8	M 628-DC, Fanatic E 628-LMG, Dimitrov 149/Korskii 8-1 fire at Rooftop 23Y9 with 9 FP = 3 FP (2 FP LMG + 1 FP Dimitrov)+ 6 FP (6FP x2, x Long range x½)	+1 Height advantage	🎲	🎲	
586	23Y8	23Y6	Level 0 L 458-DC DFIFire at Rooftop 23Y6 with 4 FP	+1 Height advantage	🎲	🎲	NE
587	23V5	23Y6	O 628 DFIFire at Rooftop 23Y6 with 3 FP (6 FP x½ Long range)	+1 Height advantage	🎲	🎲	NE
ADVANCE FIRE PHASE							
588	22C9	22B9	B 658 ADFire at 22B8 with 6 FP (6 FP x½ Afph x 2 PBR)	+1 woods	🎲	🎲	2MC
589	22B9		Broken C 248-LMG 2MC		🎲	🎲	Pin, No effect Broken, DM +4
590	23Z1		A 658-LMG PF usage dr				Panzerfaust available
591	23Z1	23X2	A 658-LMG lose ? ADFire PF at E IS-2m in 23X2 PF TH#6 range 2	-1 (1945 rule C 13.31) +4 (+2 Afph Case C3, +2 Ground Level Building)	🎲	🎲	Miss, -1PF. Russian SAN
592			Russian SAN dr				Activate
593	23Y6		Sniper Direction DR		🎲	🎲	Located 23Y6 ==> 23EE9 => 23FF9
594	23FF9		G 658				Break DM+4

Serial	Initial Hex location	Target hex Location	Event	DRM	Red Die	White Die	Result
595	22C10	22P9	Blaze spreading DR to wood building => 8	-2 Not directly attached	☒	☐	NE
596	22C10	22O9	Blaze spreading DR to wood building => 8	-2 Not directly attached	☒	☐	Flame place in 22O9
597	22M10		Flame spreading DR to stone building => 9		☒	☐	NE
598	22L9		Flame spreading DR to stone building => 9		☒	☐	Blaze Spread
Rout Phase							
599	23GG9		Broken DM Q 628-LMG Abandoned LMG				Q 628 Eliminated for failure to Rout
600	22B9	22AA10	Broken DM C 248-LMG rout to 22AA10 using low crawl				6 MF
601	22L9	22K9	Nemchikok 149 Wounded escaping blaze into 22K9 (takes wound severity dr)		☐	☐	NE, Heroes can't break is wounded instead
602	23Y6	23Y7	Rooftop Broken DM J 348-LMG rout to Rooftop 23Y7 using low crawl				6 MF
Advance Phase							
603	22C9	22B9	B 658 advance to 22B9				
604	23DD7	23CC7	E 658 advance to 23CC7				

Close Combat Phase

Turn 5

Serial	Initial Hex location	Target hex Location	Event	DRM	Red Die	White Die	Result
Russian Turn							
Rally Phase							
605			Wind change DR		☐	☐	Gusts
606			Wind direction dr		☐	☐	Flame placed in 22P9 and 22N8
607			Blazin Building Collapse during Gust B25.66				22L9 building rubble
608	23W3		B T-34/85 MA repair attempt		☐	☐	NE
609	23X6		Broken DM F 458-DC first Attacker self rally attempt	+4 (+4 DM, +1 No Leader, -1 RA Building)	☒	☐	Fail
610	23U8		Broken Kamensky 8-0 self rally attempt		☐	☐	Fail
Prep Fire Phase							
611	23X2	23Z1	Stopped CE E IS-2m PFire with MA HE at Infantry in building 23Z1 range 2 TH # 8 change TCA Y2-Y3	+5 TH (+2 CA ST, +3 TEM)	☐	☐	Miss, -1 ACQ
612	23X2	23Z1	Stopped CE E IS-2m PFire with CMG at 23Z1 with 4FP	+5 (+2 CA ST, +3 TEM)	☐	☐	NE
Movement Phase							
613	22H8	23AA10	I 458-HMG/Levkov 8-0 move to 23AA10				5 MF
614	23Z10	23DD9	O 248 move to 23DD9				4 MF
615	23V5	23X4	O 628 move to 23X4				2 MF
616	23CC7		E 658 DFFire at 23X4 with 6 FP	-2, (-1 FFMO, -1 FFNAM)	☐	☐	PTC, 3 RFP
617	23X4		O 628 PTC		☐	☐	Pass
618	23X4		O 628 continue move to 23X3				3 MF (2 MF +1 MF)
619	23Z1	23Y3	A 658-LMG DFFire at 23Y3 with 9FP	+1, (+2 Wreck blaze, -1 FFNAM)	☐	☐	NE, 4 RFP
620	23W6	23Z3	Pavlovski 149-LMG move to 23Z3				6 MF
621	23W6	23Y3	P 628 move to 23Y3 double time movement				5 MF
622	23Y3		Residual FP attack P 628 in 23Y3 with 4 FP	+1, (+2 Wreck blaze, -1 FFNAM)	☐	☐	NE
623	23Y3	23Z3	P 628 Continue move to 23Z3				6 MF (5 MF +1 MF)
624	23V10	23X5	? Semenov 149 move to 23X5				6 MF
625	23Y7	23Z6	D 458, N248 move to Rooftop 23Z6				4 MF
626	23Y8	23Y7	L 458-DC move to Level 2 23Y7				4 MF
627	23U9	23W5	Dimitrov 149 Move to 23W5				5 MF
628	23W3	23Y2	CE B T-34-85 Start and move to 23Y2, stop CA Z1-Z2				7 ½ MP
629	23Y2	23Z1	CE B T-34-85 BFire BMG-CMG at 23Z1 with 6 FP (6 FP x½ Bounding Fire, x2 PBR)	+3 TEM	☐	☐	NE
630	23U9	23X6	Korskii 8-1 move to level 0 23X6				
631	23U9	23V5	M 628-DC, Fanatic E 628-LMG move to 23V5				
632	23Z9	23AA9	+1 TH CE A T-34/85 Start move to Stop change CA AA8-BB8				6MP
633	23AA9	23CC7	+1 CE A T-34-85 BFire BMG-CMG at 23CC7 with 3 FP (6 FP x½ Bounding Fire)	+3 TEM	☐	☐	NE, German SAN
634			German SAN dr				NE
635	23AA9	23CC7	+1 CE A T-34-85 BFire MA HE at infantry 23CC7 range 3 TH#8	+8 TH (+2 Case B, +2 Case C, +3 TEM, +1 TH stun)	☐	☐	Miss, -1 ACQ
Defensive Fire Phase							
636	22BB9	22A10	B 658 fire at 22A10 with 12FP (6FP x2 PBR)		☐	☐	NMC

Serial	Initial Hex location	Target hex Location	Event	DRM	Red Die	White Die	Result
637	22A10		Broken C 248-LMG NMC		☒	☒	Fail, C 248 Eliminated Casualty Reduction
ADVANCE FIRE PHASE							
638	23AA10	23CC7	I 458-HMG/Levkov 8-0 ADFire at 23CC7 with 5 FP (10 FP x½ Afph)	+3 TEM	☒	☒	NE
639	23DD9	23FF9	O 248 ADFire at 23FF9 with 1 FP (2 FP x½ Afph)	+1 TEM	☒	☒	NE
640	23Z6	23CC7	Rooftop N 248, D 458 ADFire at 23FF9 with 3 FP (6 FP x½ Afph)	+3 TEM	☒	☒	NE
641	22L9	22K10	Blaze spreading DR to stone building => 9		☒	☒	NE
642	22L9	22K9	Blaze spreading DR to wood building => 8	-2 Not directly attached	☒	☒	NE
643	22P9		Flame spreading DR to wood building => 8		☒	☒	NE
644	22O9		Flame spreading DR to wood building => 8		☒	☒	NE
645	22M10		Flame spreading DR to stone building => 9		☒	☒	NE
646	22N8		Flame spreading DR to wood building => 8		☒	☒	NE
ROUT PHASE							
647	23FF9	22BB9	Broken G 658 rout to 22BB9				3 MF Eliminated for failure to rout (SS vs Russian), Abandon LMG
648	23Y7	23Z6	Broken J 348-LMG Fail to rout abandon LMG				
ADVANCE PHASE							
649	23Z3	23AA3	Cx P 628, Pavlovski 149-LMG advance to 23AA3				
650	23X3	23Y3	O 628 advance to 23Y3				
651	23W5	23X4	Dimitrov 149 advance to 23X4				
652	23V5	23W5	M 628-DC, Fanatic E 628-LMG				
653	23X5	23X4	? Dimitrov 149 lose ? advance to 23X4				
654	23Y7	23Y7	Level 2 L 458-DC advance to Rooftop 23Y7				
655	23X6	23Y6	Level 0 L 447-LMG advance to Level 0 23Y6				
656	23DD9	23CC9	O 248 advance to 23CC9				
CLOSE COMBAT PHASE							
German Turn							
RALLY PHASE							
657			Wind change DR		☒	☒	NE
658	22B9		Rooftop Broken DM G 658 first Attacker self rally attempt	+5 (+4 DM, +1 No Leader)	☒	☒	Fail
659	23U8		Broken Kamensky 8-0 self rally attempt		☒	☒	Fail
660	23X6		Level 0 F 458-DC/Korskii 8-1 rally attempt	-1 LEAD +2 (+1 broken, +2 Russian, -1 Elite)	☒	☒	Rally, HOB D 458-DC Berserk (15.5)
661	23X6		F 458-DC HOB DR		☒	☒	
662	23Y2		B T-34/85 MA repair attempt		☒	☒	NE
PREP FIRE PHASE							
663	23Z1		A 658-LMG PF usage DR	-1 (1945 rule C 13.31)			Panzerfaust available
664	23Z1	23Y2	A 658-LMG PFire PF at A T-34-85 23Y2 PF TH#8 range 1	+2 (+2 Afph Case C3)	☒	☒	Miss, -1PF
665	23Z1		A 658-LMG PF usage DR (Forfeit SW usage C13.31)	-1 (1945 rule C 13.31)			Panzerfaust available
666	23Z1	23Y2	A 658-LMG PFire PF at A T-34-85 23Y2 PF TH#8 range 1	+2 (+2 Afph Case C3)	☒	☒	Miss, -1PF
667	23CC7	23Z6	E 658 PFire at Rooftop 23Z6 with 6FP	+1 Height advantage	☒	☒	NE
MOVEMENT PHASE							
668	22B8	23DD10	B 658 move to 23DD10				4 MF
669	23AA10	23DD10	I 458-HMG/Levkov 8-0 DFFire at 23DD10 with 10 FP	+2 (+3 TEM, -1 FFNAM)	☒	☒	NMC, ROF
670	23DD10		B 658 NMC		☒	☒	Pass, HOB B 658 becomes Fanatic, HERO Friedrich 149 Created (15.5)
671	23DD10		B 658 HOB DR	-1 (-1 Elite)	☒	☒	
672	23AA10	23DD10	I 458-HMG ROF at 23DD10 with 6 FP	+2 (+3 TEM, -1 FFNAM)	☒	☒	NE, Cowers IFT=> 2 FP
673	23CC9	23DD10	O 248 DFFire at 23DD10 with 2FP	+2 (+3 TEM, -1 FFNAM)	☒	☒	NE
DEFENSIVE FIRE PHASE							
674	23Y2	23Z1	CE B T-34-85 DFIFire BMG-CMG at 23Z1 with 12 FP (6 FP x2 PBR)	+3 TEM	☒	☒	PTC
675	23Z1		A 658-LMG PTC		☒	☒	Pass
676	23X2	23Z1	Stopped CE E IS-2m DFIFire with MA HE at Infantry in building 23Z1 range 2 TH # 8 TCA Y2-Y3	+3 TH (-1 ACQ, +3 TEM, +1 AFV Hindrance)	☒	☒	Miss, -2 ACQ
677	23X2	23Z1	Stopped CE E IS-2m DFIFire with CMG at 23Z1 with 4FP	+4 (+3 TEM, +1 AFV Hindrance)	☒	☒	NE
678	23AA3	23Z1	Cx P 628, Pavlovski-LMG DFIFire at 23Z1 with 9FP	+4 (+3 TEM, +1 Cx)	☒	☒	NE, Cowers IFT=> 6 FP
679	23AA9	23CC7	+1 CE A T-34-85 DFIFire MA HE at infantry 23CC7 range 3 TH#8	+3 TH (-1 ACQ, +3 TEM, +1 TH)	☒	☒	Hit, -2 ACQ
680	23CC7		Attacked with 17 FP (85 mm HE hit)		☒	☒	2MC

Serial	Initial Hex location	Target hex Location	Event	DRM	Red Die	White Die	Result
681	23CC7		E 658 2MC		☒	☒	Break +4 DM
682	23AA9	23CC7	+1 CE A T-34-85 DFire BMG-CMG at 23CC7 with 6 FP	+4 (+3 TEM, +1 IFT stun)	☒	☒	1MC
683	23CC7		DM Broken E 658 1MC		☒	☒	Pass, HOB E 658 Rally becomes Fanatic, HERO Von Miller 149 Created (15.5)
684	23DD10		DM Broken E 658 HOB DR	0 (-1 Elite, +1 broken)	☒	☒	
685	23Z6	23CC7	Rooftop N 248, D 458 DFire at 23CC7 with 6 FP	+3 TEM	☒	☒	NE
ADVANCE FIRE PHASE							
686	23DD10	23AA10	B 658, Friedrich 149 ADFire at 23AA10 with 4½FP 4 FP (6FP x½ Afph +1FP Assault fire) +½FP (1FP x½ Afph)	+2 TEM	☒	☒	NE
687	22L9	22K10	Blaze spreading DR to stone building => 9		☒	☒	NE
688	22L9	22K9	Blaze spreading DR to wood building => 8	-2 Not directly attached	☒	☒	Flame spread to 22K9
689	22P9		Flame spreading DR to wood building => 8		☒	☒	Blaze spread
690	22O9		Flame spreading DR to wood building => 8		☒	☒	Blaze spread
691	22M10		Flame spreading DR to stone building => 9		☒	☒	NE
692	22N8		Flame spreading DR to wood building => 8		☒	☒	NE

ROUT PHASE

ADVANCE PHASE

693	23DD10	22E10	Friedrich 149 Advance to 22E10
694	23CC7	23CC8	Friedrich 149 Advance to 23CC8
695	23CC7	23DD7	E 658 Advance to 23CC8

CLOSE COMBAT PHASE

Turn 6

Serial	Initial Hex location	Target hex Location	Event	DRM	Red Die	White Die	Result
RUSSIAN TURN							
RALLY PHASE							
696			Wind change DR		☒	☒	NE
697	23Y7		L 458 DC recovery dr abandoned g LMG		☒	☒	g LMG recovered
698	23Y2		B T-34/85 MA repair attempt		☒	☒	NE
699	23U8		Broken J 458-FT first self-rally attempt	+1 No Unbroken Leader	☒	☒	Fail
700	23U8		Broken Kamensky 8-0 self rally attempt	+1 No Unbroken Leader	☒	☒	Fail
PREP FIRE PHASE							
701	23CC9	23CC8	O 248 PFire at 23CC8 with 4 FP (2FP x2 PBR)	+3 TEM	☒	☒	
702	23AA10	23DD10	I 458-HMG/Levkov 8-0 PFire at 23DD10 with 10 FP	+3 TEM	☒	☒	1MC, ROF
703	23DD10		FANATIC B658 1MC		☒	☒	Break DM+4
704	23AA10	22E10	HMG ROF PFire at 22E10 with 6FP	+2 TEM	☒	☒	1MC, ROF
705	22E10		Friedrich 149 1MC		☒	☒	Pass
706	23AA10	22E10	HMG ROF PFire at 22E10 with 6FP	+2 TEM	☒	☒	NE
707	23Y2	23Z1	CE B T-34-85 PFire BMG-CMG at 23Z1 with 12 FP (6 FP x2 PBR)	+3 TEM	☒	☒	2MC
708	23Z1		A 658-LMG 2MC		☒	☒	Break DM+4
709	23X2	23Z1	Stopped CE E IS-2m PFire with MA HE at Infantry in building 23Z1 range 2 TH # 8	+2 TH (-2 ACQ, +3 TEM, +1 AFV Hindrance)	☒	☒	Hit, -2 ACQ
711	23Z1		attacked with 24 FP (122 mm HE hit)		☒	☒	3MC
712	23Z1		DM Broken A 658-LMG 3MC		☒	☒	Casualty Reduction to 348
713	23X2	23Z1	Stopped CE E IS-2m PFire with CMG at 23Z1 with 4FP	+4 (+3 TEM, +1 AFV Hindrance)	☒	☒	NE
714	23AA9	23CC8	+1 CE A T-34-85 PFire MA HE at infantry 23CC8 range 2 TH#8	+4 TH (+3 TEM, +1 TH)	☒	☒	Miss, -1 ACQ
715	23AA9	23CC8	+1 CE A T-34-85 PFire BMG-CMG at 23CC8 with 6 FP	+4 (+3 TEM, +1 IFT stun)	☒	☒	PTC, German SAN
716			German SAN dr		☒	☒	Activate
717	22K7		Sniper Direction DR		☒	☒	Located 22K7 ==> 22K8 => 23Y7
718					☒	☒	Break DM+4 L 458-DC-gLMG
719	23CC8		Von Miller 149 PTC		☒	☒	Pin
MOVEMENT PHASE							
720	23X6	23Z1	Berserk O 458-DC charge to 23Y1 enter CC		☒	☒	7 MF
721	23Y3	23Y1	O 628 move to 23Y1		☒	☒	2 MF
722	23X4	23Y1	Dimitrov 149, Semenov 149 move to 23Y1		☒	☒	4 MF
723	23X6	23Y1	Korskii 8-1 move to Rooftop 23Y7		☒	☒	4 MF
724	23W5	23Y2	M 628-DC, Fanatic N 628-LMG move to 23Y2		☒	☒	4 MF

Serial	Initial Hex location	Target hex Location	Event	DRM	Red Die	White Die	Result
725	23Z6	23Y8	Rooftop N 248 move to Rooftop 23Y8 Attempt recovery of gMMG				3 MF
726	23Y8		N 248 DC recovery dr abandonned gMMG				gMMG recovered
727	23Y6	23Z6	Level 0 E 447-LMG move to Rooftop 23Z6				4 MF
728	22K9	22I9	Wounded Nemchikov 138 move to 22I9				3 MF
DEFENSIVE FIRE PHASE							
729	22E10	23AA10	Friedrich 149 DFire at 23AA10 with 1 FP	+2 TEM	Red 1	White 1	PTC
730	23AA10		Levkov 8-0 PTC		Red 1	White 1	Pin
731	23AA10		I 458-HMG PTC		Red 1	White 1	Pass
732	23DD2	23AA3	? F 348 Lose ? DFire at 23AA3 with 3FP	+ 3 TEM	Red 1	White 1	NE
ADVANCE FIRE PHASE							
733	23AA3	23DD2	P 628, Pavlovski 149-LMG AFire at 23DD2 with 4FP 2½ FP (6FP x½ AFph X½ long range +1FP Assault fire) +1½FP (1+2FP x½ AFph)	+3 TEM	Red 1	White 1	NE
734	23Z6	23CC8	Rooftop D 458, E 447-LMG AFire at 23CC8 with 5FP (10 FP x½ AFph)	+ 3 TEM	Red 1	White 1	NE
735	23Y8	23CC8	Rooftop N 248-gMMG AFire at 23CC8 with 3½ FP (7 FP x½ AFph)	+ 3 TEM	Red 1	White 1	NE, gMMG malfunction
736	22P9	22P8	Blaze spreading DR to wood building => 8		Red 1	White 1	NE
737	22O9	22P8	Blaze spreading DR to wood building => 8		Red 1	White 1	Flame spread to 22P8
738	22L9	22L10	Flame spreading DR to woods => 8	-2 Not directly attached	Red 1	White 1	Flame spread to 22L10
739	22L9	22K10	Flame spreading DR to stone building => 9		Red 1	White 1	NE
740	22M10		Flame spreading DR to stone building => 9		Red 1	White 1	Blaze Spread
741	22N8		Flame spreading DR to wood building => 8		Red 1	White 1	NE
742	22K9		Flame spreading DR to wood building => 8		Red 1	White 1	NE
ROUT PHASE							
743	23DD10	22D9	DM broken fanatic B 658 rout to 22D9				2 MF
744	22B9		Broken G 658 rout to 22D9				4 MF
ADVANCE PHASE							
745	23Y1	23Z1	O 628, Dimitrov 149, Semenov 149 advance into CC to 23Z1				CC
746	23Y2	23Z2	M 628-DC, Fanatic N 628-LMG advance to 23Z2				
747	23AA3	23BB3	P 628, Pavlovski 149-LMG advance to 23BB3				
CLOSE COMBAT PHASE							
748	23Y7		Berserk F 458-DC, O 628, Dimitrov 149, Semenov 149 CC attack broken A 348-LMG ratio 4-1 CC# 9	-2 vs broken	Red 1	White 1	Broke A 348-LMG eliminated in CC, F 458 Lose berserk. LMG abandonned
749	23Y7		Broken A 348-LMG defend CC Berserk F 458-DC, O 628, Dimitrov 149, Semenov 149 ratio 1-4 CC# 3		Red 1	White 1	NE
German Turn							
RALLY PHASE							
750			Wind change DR		Red 1	White 1	NE
751	23Z1		O 628 g LMG recovery attempt				g LMG recovered by O 628
752	23Y2		B T-34/85 MA repair attempt				NE
753	23Y8		N 248 g MMG repair attempt				g MMG repaired
754	22D9		Broken G 628 first self-rally attempt (A 10.63)	+1 No Unbroken Leader	Red 1	White 1	Rally
755	23U8		Broken Kamensky 8-0 self rally attempt	+1 No Unbroken Leader	Red 1	White 1	Rally
756	23U8		Broken 628-FT/Kamensy 8-0 rally attempt	-1 RA Building	Red 1	White 1	Fail
757	23Y7		Rooftop Broken DM+4 L 458-DC-gLMG/Korskii 8-1 rally Attempt	+3 (+4 DM,-1 LEAD)	Red 1	White 1	Fail
PREP FIRE PHASE							
758	23DD2	23BB3	F 348 PFire at 23AA3 with 3FP	+ 3 TEM	Red 1	White 1	NE
759	23DD7	23CC9	Fanatic E 658 PFire at 23CC9 with 6FP	+ 3 TEM	Red 1	White 1	1MC
760	23CC9		O 248 1MC		Red 1	White 1	Pass
761	22E10	23AA10	Friedrich 149 PFire at 23AA10 with 1 FP	+2 TEM	Red 1	White 1	NMC
762	23AA10		Levkov 8-0 NMC		Red 1	White 1	Pass
763	23AA10		I 458-HMG NMC		Red 1	White 1	Pass
764	23CC8	23CC9	Von Miller 149 PFire at 23CC9 with 2FP (1FP x2 PBR)	+ 3 TEM	Red 1	White 1	NE

Serial Initial Hex Target hex Location Event

DRM

Red Die White Die

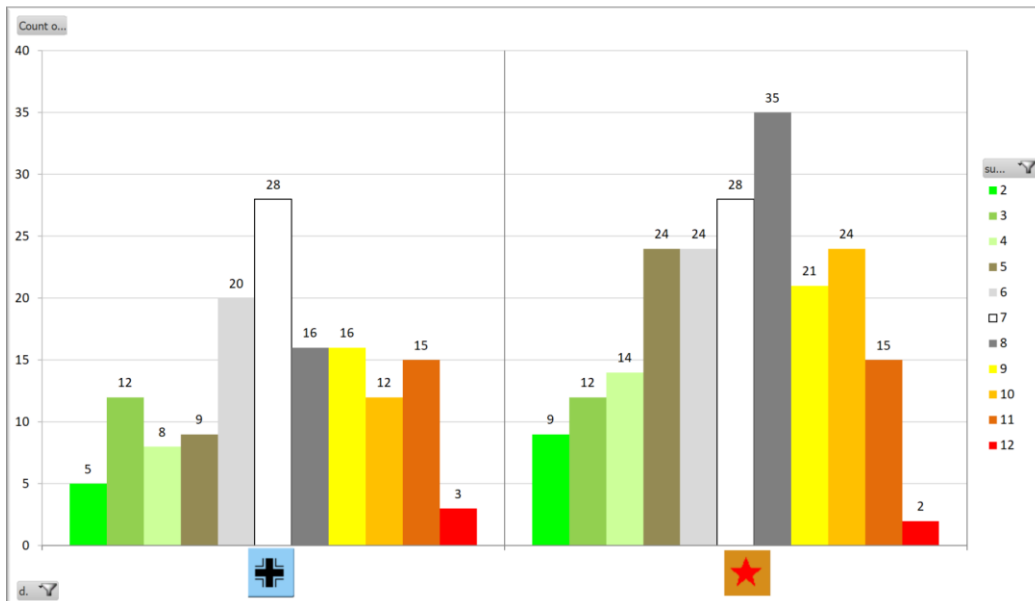
Result

Unable to retake control of Victory locations, German player forfeit game on turn 6.
 Russian wins controlling 2 out of 3 victory Locations at game's end (23Y7 and 23AA3)



Count of sum DR2	Column Labels	2	3	4	5	6	7	8	9	10	11	12	Grand Total
g		5	12	8	9	20	28	16	12	15	3		144
r		9	12	14	24	24	28	35	21	24	15	2	208
Grand Total		14	24	22	33	44	56	51	37	36	30	5	352

ASL Scenario J1 Urban Guerilla DICE Roll numbers



Count of sum DR2	Column Labels	2	3	4	5	6	7	8	9	10	11	12	Grand Total
g		3,47%	8,33%	5,56%	6,25%	13,89%	19,44%	11,11%	11,11%	8,33%	10,42%	2,08%	100,00%
r		4,33%	5,77%	6,73%	11,54%	11,54%	13,46%	16,83%	10,10%	11,54%	7,21%	0,96%	100,00%
Grand Total		3,98%	6,82%	6,25%	9,38%	12,50%	15,91%	14,49%	10,51%	10,23%	8,52%	1,42%	100,00%

ASL Scenario J1 Urban Guerilla DICE Roll numbers

